

# **JSPervletPkg JES2 version**

## TABLE OF CONTENT

<b>1</b>	<b>FOREWORD</b> .....	<b>4</b>
<b>2</b>	<b>PARAMETERS</b> .....	<b>4</b>
2.1	CACHEPATH.....	5
2.2	TOTRACE.....	5
2.3	TOSTAT.....	5
2.4	ID.....	6
2.5	LOGFILE.....	6
2.6	REMOTELOCATIONS.....	6
2.7	EXPIRATION.....	6
2.8	CONTEXTPATH.....	6
2.9	USEBUNDLESPACE.....	6
2.10	ALLPERMISSIONPOLICY.....	7
2.11	DEFAULTPOLICY.....	7
2.12	KEYSTORE.....	7
2.13	KEYSTOREPASSWORD.....	8
2.14	CAURL.....	8
2.15	CRLURL.....	8
2.16	CALDAPUSER.....	8
2.17	CALDAPPASSWD.....	8
2.18	CRLLDAPUSER.....	8
2.19	CRLLDAPASSWD.....	9
2.20	CRLPERIOD.....	9
<b>3</b>	<b>STATISTICS AND TROUBLESHOOTING</b> .....	<b>9</b>
<b>4</b>	<b>NOTES ON IMPLEMENTATION</b> .....	<b>10</b>
4.1	DYNAMIC UPDATE.....	10
4.1.1	<i>Definition section</i> .....	10
4.1.2	<i>Loaded/defined section</i> .....	11
4.2	RESOURCE HANDLING.....	12
<b>5</b>	<b>SPECIAL CASES</b> .....	<b>13</b>
5.1	REQUESTDISPATCHER.....	13
5.2	USE OF SSL.....	13
5.3	LOAD TEST.....	13
5.4	FUNCTIONAL TESTS.....	13
5.4.1	<i>Update</i> .....	13
5.4.2	<i>Security</i> .....	13
5.4.3	<i>Misc</i> .....	14
<b>6</b>	<b>LIMITATIONS</b> .....	<b>14</b>
<b>7</b>	<b>DIFFERENCES BETWEEN APPLICATION SERVER AND JES 2 VERSION</b> .....	<b>15</b>
<b>8</b>	<b>MISCELLANEOUS</b> .....	<b>15</b>
8.1	LICENSE.....	15
8.2	DELIVERIES.....	16

## TABLE OF FIGURES

FIGURE 1: STATISTICS USING SERVLETSTAT.....	9
FIGURE 2: LOG USING SERVLETLOG.....	10
FIGURE 3: SERVLETUPDATE DEFINITION .....	11
FIGURE 4: SERVLETUPDATE LIST.....	12

## 1 Foreword

This document describes the Java Embedded Server 2 (JES2) version of JSPservletPkg. JSPservletPkg is a complete implementation for servlets and JSP handling from a remote repository and with dynamic update.

The document doesn't refer to the Application Server version but when I describe the differences between both versions.

## 2 Parameters

This version is designed to be deployed in JES2 bundles. So its archive must have a Manifest like this:

```
Bundle-Name: JSPservlet
Bundle-Description: JSPservlet
Bundle-Vendor: Alexis Grandemange (GNU GPL 2).
Bundle-Version: 1.0.1
Bundle-DocURL: http://java.sun.com/products/embeddedserver
Bundle-ContactAddress: alexis.grandemange@pagebox.net
Bundle-Activator: JSPservletPkg.JSPHandler
Import-Package: org.osgi.service.http,
    javax.servlet; specification-version=2.1.1,
    javax.servlet.http; specification-version=2.1.1,
    com.sun.jes.service.http.auth.basic
Import-Service: com.sun.jes.service.http.auth.basic.BasicSchemeHandler
```

There is no limitation to the number of bundles, which can be configured, in a given Application Server.

Its configuration is specified by a property file named *Bundle-Name.properties* where *Bundle-Name* is the name you gave to the bundle in the manifest. Here is an example of configuration:

```
cachePath=/jdk
toTrace=TRUE
toStat=TRUE
logfile=/jdk/log.txt
remoteLocations=/jdk/jdk.properties
allPermissionPolicy=C:/temp/JES2/allPermission.policy
defaultPolicy=C:/temp/JES2/default.policy
keystore=C:/temp/JES2/keystore
keystorePassword=keystorePswd
adminUser=admin
adminPasswd=admin
ID=Hamlet
contextPath=/jdk
useBundleSpace=TRUE
CRLURL=ldap://localhost/CN=alexis,CN=agrandem ,CN=CDP,CN=Public Key
Services,CN=Services,CN=Configuration,DC=alexis
CAURL=ldap://localhost/CN=alexis,CN=AIA,CN=Public Key
Services,CN=Services,CN=Configuration,DC=alexis
CRLLDAPuser=Alexis/Users/Administrator
CRLLDAPpasswd=gunnm007
CALDAPuser=Alexis/Users/Administrator
```

```
CALDAPpasswd=aunnm007
expiration=30
CRLperiod=30
```

This file acts as the web.xml of Application Servers' version.  
I bolded the parameters that doesn't exist in web.xml version.  
The package must contain:

```
WEB-INF
Web.xml // as the file a bove
classes
  JSPupdate.class
  JSPservletPkg
    CRLchecker.class
    JSPhandler$ClassEntry$ServletInfo.class
    JSPhandler$ClassEntry$Stat.class
    JSPhandler$ClassEntry.class
    JSPhandler$Log.class
    JSPhandler$Scanner.class
    JSPhandler.class
    JSPloader$ClassInfo.class
    JSPloader$ProtectionDomainInfo.class
    JSPloader$ResourceEntry.class
    JSPloader.class
    JSPloaderException.class
    JSPresourceServlet.class
    ResourcePrivilegedAction.class
    PageBoxAPI.class
    ServletLog.class
    ServletStat.class
    ServletUpdate.class
```

We detail below JSPservlet.properties parameters.

## 2.1 *cachePath*

*cachePath* is the location where jars are locally stored after been retrieved from remote location.  
Default value: C:/temp.

## 2.2 *toTrace*

Tells if the tool must write diagnostic messages.  
Default value: false.

## 2.3 *toStat*

Tells if the tool must record statistics.  
Default value: false.

If true, statistics are recorded **per archive** in a file *cachePath/archive.stat*, which is a property file,  
for instance:

```
#Sun Nov 19 23:20:32 CET 2000
TestServlet/FileAccess=3
helloImg=8
TestServlet/OtherServlet=2
SnoopJSP=3
TestServlet/ForwardingServlet=4
```

SnoopServlet=2

## 2.4 ID

Allows the deployer to specify a unique identifier.  
PageBoxAPI allows retrieving this ID.  
Application: deployment of a large number of instances.

No default value.

## 2.5 logfile

Tells where the tool must write diagnostic messages.  
Default value: \$CachePath/log.txt.

## 2.6 remoteLocations

Location of a property file containing jar names and associated URLs.  
Default value: \$CachePath/\$ContextPath.properties where ContextPath indicated the name the war file is deployed with.

JSPupdate updates this file. It is OK to modify it manually but don't expect to retrieve your comments.

## 2.7 expiration

You can set this parameter to minimize the round trip number between the browser and the server.  
JSPservlet sets the *Expire* header field of static content (content with an extension different of *class*). It computes the *Expire* as *current\_time + expiration*.  
*expiration* unit is second.

Default value: 5 seconds.

## 2.8 contextPath

contextPath is the equivalent of the name you give to the JSPservletPkg Web Archive in Application Servers configuration.  
Consider you configure JES2 http server to handle requests toward <http://myserver:8080>, you will invoke a servlet defined in archive myarchive.jar in mypath/myservlet with <http://myserver:8080/contextPath/myarchive/mypath/myservlet>.

Default: none. Must be specified.

## 2.9 useBundleSpace

Boolean. If true, uses JES 2 BundleContext's `getDataFile` to create File objects in the persistent storage area provided for the bundle by the framework.  
I recommend setting it to true first because it is a requirement for well-behaving bundles and second because it provides useful features such as removing all bundle files when the bundle is uninstalled.

If you set it to true, path parameters are relative to the bundle space root but:

- allPermissionPolicy
- defaultPolicy

The reason is these files must be installed separately and are not related to a bundle.

This version requires the platform supports file systems .

Default: true.

## 2.10 *allPermissionPolicy*

If it is set, *allPermissionPolicy* is the path to a policy file with syntax conforming to the Java 2 security specification. If *defaultPolicy* is also set it means:

1. JSPservletPkg will implement sandboxes. So every archive will run with the permissions defined either in *cachePath/archive.policy* or in *cachePath/java.policy* where:
  - *cachePath* is the *cachePath* initialization parameter value
  - *archive* is the archive name without suffix
2. The Java server itself will run with the permission described in *allPermissionPolicy*.

The following no-brainer *allPermissionPolicy* will work in all cases:

```
grant {  
    permission java.security.AllPermi ssion;  
};
```

**Note that you should never grant permissions in *cachePath/archive* policy as these files are downloaded from the archive location.**

Default: the parameter has no default value.

## 2.11 *defaultPolicy*

If it is set, *defaultPolicy* is the path to a policy file with syntax conforming to the Java 2 security specification. If *allPermissionPolicy* is also set it means:

1. JSPservletPkg will implement sandboxes. So every archive will run with the permissions defined either in *cachePath/archive.policy* or in *cachePath/java.policy* where:
  - *cachePath* is the *cachePath* initialization parameter value
  - *archive* is the archive name without suffixIf no policy applies to the archive, then *defaultPolicy* is used
2. The Java server itself will run with the permission described in *allPermissionPolicy*.

The Java server itself will run with the permission described in *allPermissionPolicy*.

Default: the parameter has no default value.

## 2.12 *keystore*

*keystore* is the name of the key store in *cachePath* directory, for instance "keystore" but not "/mydir/keystore" or "mydir/keystore".

If *keystore* is set, when JSPservletPkg downloads an archive, it tries

- ?? To download a certificate from the same location as the archive and named *archive.cer*. If it finds, it adds the certificate to *keystore*, which has to be in Sun JKS format with an *archive* alias
- ?? To download a permission file from the same location as the archive and named *archive.policy*. This file should only contain permission entries. JSPservletPkg adds a *keystore* line, builds the appropriate grant line and stores it in *cachePath/archive.policy* in order to implement a sandbox with the permissions requested by the provider.

The archive user has no longer to administrate security. It is appropriate for trusted providers.

Default: the parameter has no default value.

### **2.13 keystorePassword**

Password JSPservletPkg uses to access the keystore.

Default: the parameter has no default value.

### **2.14 CAURL**

When JSPservletPkg implements sandboxes, it processes signed archives and retrieve classes certificate chain. If CAURL is set, it connects to this URL and expects to retrieve a Certificate Authority certificate used in the classes certificate chain.

If it fails to connect to the CA or if what it retrieves is not a certificate, it logs an ERROR entry with "directory access failure". If the certificate is valid but not present in a class certificate chain, it invalidates the class just as if one of its certificates was revoked.

**Note that JSPservletPkg doesn't load the class and therefore doesn't raise a security but a class not found exception.**

If you set this parameter, you MUST add JNDI to your Java Server CLASSPATH in JDK 1.2. In JDK 1.3, you don't have to, as JNDI is included in JDK.

Default: the parameter has no default value.

### **2.15 CRLURL**

When JSPservletPkg implements sandboxes, it processes signed archives and retrieve classes certificates.

If CRLURL is set, it connects to this URL and expects to retrieve a Certificate Revocation List (CRL) used to check if a class certificate is revoked.

If it fails to connect to the CA or if what it retrieves is not a CRL, it logs an ERROR entry with "directory access failure". If the CRL is valid and it finds one of the class certificates in it, it invalidates the class.

**Note JSPservletPkg doesn't load the class and therefore doesn't raise a security but a class not found exception.**

If you set this parameter, you MUST add JNDI to your Java Server CLASSPATH in JDK 1.2. In JDK 1.3, you don't have to, as JNDI is included in JDK.

Default: the parameter has no default value.

### **2.16 CALDAPuser**

Principal used to connect to the Directory server to retrieve CAURL.

Default: the parameter has no default value. If it is not set, the tool connects to the Directory server without credential and password (LDAPpasswd).

### **2.17 CALDAPpasswd**

Password used to connect to the Directory server to retrieve CAURL.

Default: the parameter has no default value.

### **2.18 CRLLDAPuser**

Principal used to connect to the Directory server to retrieve CRLURL.

Default: the parameter has no default value. If it is not set, the tool connects to the Directory server without credential and password (LDAPpasswd).

### 2.19 CRLLDAPpasswd

Password used to connect to the Directory server to retrieve CRLURL.

Default: the parameter has no default value.

### 2.20 CRLperiod

Defines how often the tool will connect to check for CRL updates in seconds.

Default: 7 \* 24 \* 3600 (1 week).

## 3 Statistics and troubleshooting

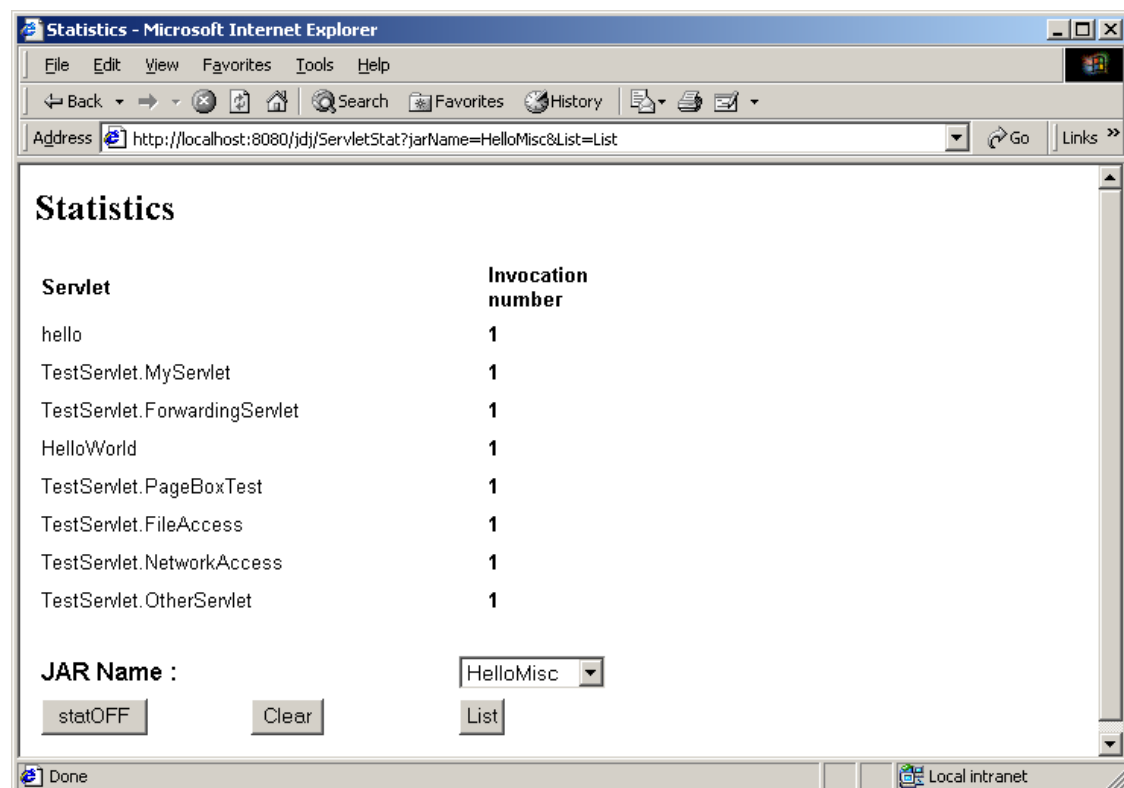


Figure 1: Statistics using ServletStat

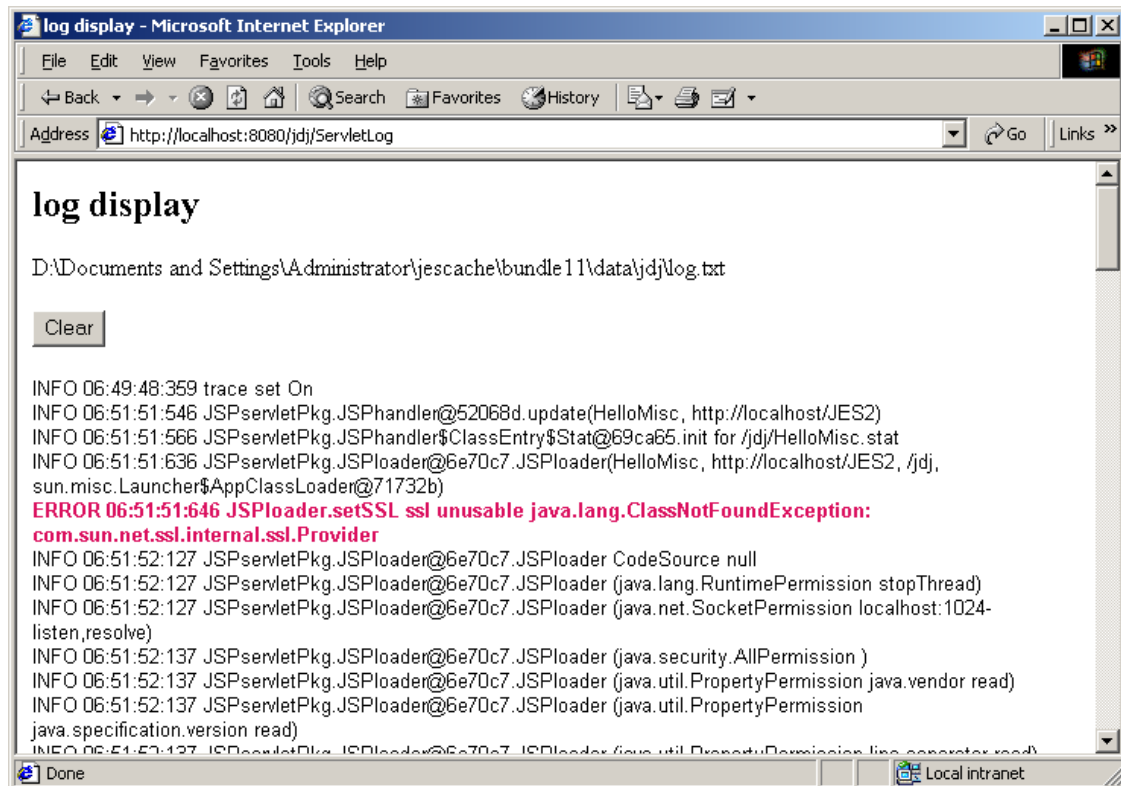


Figure 2: log using ServletLog

You can use the log path I list at the top of the screen to find out the bundle location. However it is not a hidden secret: It starts with the value of `com.sun.jes.framework.bundles.baseurl`, which is `D:\Documents and Settings\Administrator\jescache` in this case, followed by `bundle $_{id}$ \data`, where `bundle $_{id}$`  is a number set by the framework.

## 4 Notes on implementation

### 4.1 Dynamic update

Dynamic update of jar file is supported though ServletUpdate.

ServletUpdate display is split in two sections:

?? A *Definition* section at the bottom

?? A *loaded/defined* section at the top, that lists known and loaded archives

ServletUpdate uses GET mode. It is a servlet defined in the JSPservlet package.

#### 4.1.1 Definition section

You must fill the JAR Name field without extension. If you don't fill the remote location the current location is reused. It is the JAR file URL minus the file name.

Assuming you specified a jar name `myjar` and a remote location <http://www.mydownloadsite.com>, JSPservletPkg will download <http://www.mydownloadsite.com/myjar.jar> and persist your action in RemoteLocations with a property `myjar=http://www.mydownloadsite.com`.

Note the URL of ServletUpdate <http://localhost:6080/jdj/JSPupdate>. `jdj` is the contextPath. If you deploy different JSPservlet bundles, you must select the appropriate JSPservlet to require an

update. When you updates, the local cache is removed and the jar is always loaded from the remote location. You can also use ServletUpdate to add a jar.

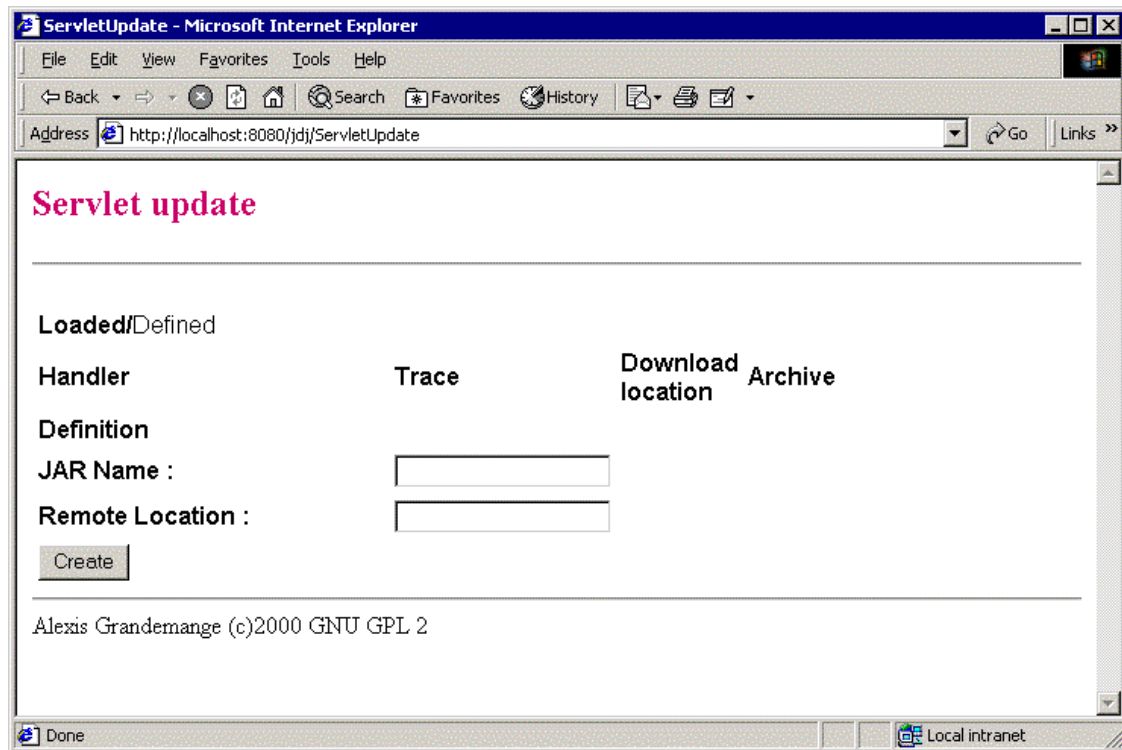


Figure 3: ServletUpdate definition

#### 4.1.2 Loaded/defined section

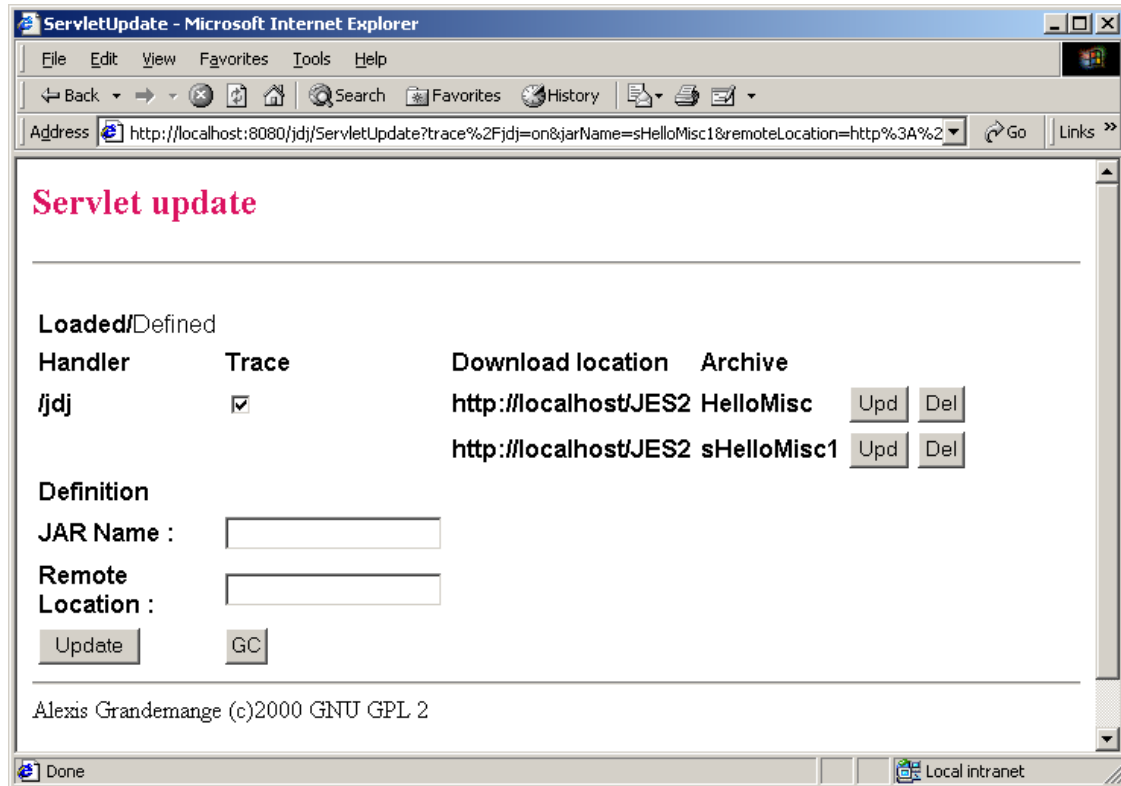


Figure 4: ServletUpdate list

It supports a trace checkbox and two buttons:

?? If trace is checked, it means that trace is on.

?? Upd in the Loaded/define section means

- Download a new version of the archive in the cache
- Replace current loaded version of classes and resources

?? Del in the Loaded/define section means

- Remove the archive from the cache
- Remove the archive servlets, classes and resources from memory

You can safely require an update when pages are accessed.

GC allows to invoke System.gc() in the Java server context.

## 4.2 Resource handling

Typical case of that is image handling.

Suppose a JSP whose URL is <http://www.mysite.com/jdj/myjar/myJSP> references an image with a relative path `images/myimage.gif`. The Application Server looks for <http://www.mysite.com/jdj/myjar/images/myimage.gif> and therefore invokes JSPresourceServlet.

JSPresourceServlet looks first for `images/myimage.gif` in the archive. If it doesn't find it, it retrieves the download location in the myjar's RemoteLocations property. If it finds its remote location is [www.mydownloadsite.com](http://www.mydownloadsite.com), it downloads the image from [www.mydownloadsite.com/images/myimage.gif](http://www.mydownloadsite.com/images/myimage.gif).

## 5 Special cases

### 5.1 RequestDispatcher

The only case where you must modify your code is when you need using a RequestDispatcher either to include or forward a request. You can use JSPservlet.getJAR() helper function.

```
RequestDispatcher rd = getServletContext().getRequestDispatcher(  
    JSPservlet.getJAR(getClasses().getClassLoader()) + OtherServlet);
```

The reason is as a servlet developer you should not hardcode neither the Web Application name as the standard enforces it, neither the jar name where your servlet will be deployed.

### 5.2 Use of SSL

JSPservlet allows using SSL to download archives using the ssl.jar bundle.

The explanation below is not JSPservlet related but it still can help you to configure the thing. As it can fail at your first attempt, I recommend you reading the JSSE API user guide. It explains you how to trace the SSL connection with `javax.net.debug=all` and gives you a lot of information.

You need first to SSL enable the Web Server where you download the archive from. It implies generating a key pair. The server keeps the private key internally and asks you to submit a certificate request to the Certificate Authority of your choice.

During the SSL handshaking, jsse will check it knows the certificate chain the Web Server presents it using the keystore specified by `com.sun.jes.impl.keystore.store`. A default keystore is defined in JES installation path/`lib/tlscerts`.

`tlscerts` format is `jks`, which means you can use `keytool` to display or update its content.

If the server Certificate Authority certificate is not in the list, you have to add it.

Retrieving it depends on the browser and on the Certificate Authority. You can ask for a DER encoded or for a base 64 format.

Then you can add your server certificate with:

```
keytool -import -file C:\TEMP \serverCA.cer -alias myCA -keystore  
<JES2-home>/lib/tlscerts -storepass passphrase
```

### 5.3 Load test

With up to 3000 servlets in a single jar file.

The performance impact of tracing is below 10%.

The sandbox performance impact is not measurable.

### 5.4 Functional tests

#### 5.4.1 Update

ServletUpdate

Multiple archives, multiple web applications

Invalid archive name/location

#### 5.4.2 Security

Non-signed archive

?? without sandbox

?? with sandbox and no definition in policy file

?? with sandbox and permissions granted in policy file.

Signed archive with and without sandbox. With sandbox:

- ?? Valid certificate
- ?? Certificate not found in CA
- ?? Revoked certificate
- ?? Uncheckable archive
  - CAURL not set or not accessible
  - CRLURL not set or not accessible
- ?? Revocation when the server is running

1 policy file per web application or 1 per archive.

No permission granted to a signed archive.

Policy/certificate download

### 5.4.3 Misc

- ?? Image handling
- ?? Beans handling
- ?? Servlet inheritance
- ?? Servlet/html include and forward
- ?? Caching
- ?? JSPservletPkg defined in CLASSPATH
- ?? https for download

## 6 Limitations

I checked the tool supports:

- ?? Servlet inheritance, case where you define a servlet as extending a base servlet.
- ?? Tag libs
- ?? JSP beans. Note however a bean is created with Beans.instantiate(). This method tries to restore the bean from a bean.ser resource and if it doesn't find it, it creates it using newInstance(). The tool searches the resource first in the archive, next in the same remote directory as the archive and finally asks the resource to the application server.

Limitations can be:

1. Though it supports the Tomcat jspc servlet compiler, JES 2 doesn't support taglib. If you need it you have to add it yourself
2. HttpJspBase.getClassLoader() doesn't return the JSPservlet class loader that knows how to find bean classes and serialized files

I chose using Sun packages as much as possible.

1. I used the tcatspcruntime bundle to provide basic JSP support.
2. I created a tagext bundle to add tag support. The purpose of this package is to export javax.servlet.jsp.tagext package that I extracted from Tomcat's servlet.jar. I defined a minimal bundle activator:

```
public class TagextActivator implements BundleActivator {
    public void start(BundleContext bundlecontext) {}
    public void stop(BundleContext bundlecontext) {}
    public TagextActivator() {}
}
```

I packaged the bundle with this manifest:

```
Manifest-Version: 1.0
Bundle-Vendor: apache.org
Bundle-Version: 1.0
Bundle-Activator: tagext.TagextActivator
Bundle-DocURL: http://jakarta.apache.org
Created-By: 1.2.2 (Sun Microsystems Inc.)
Bundle-Name: tagext
Bundle-ContactAddress: agrandemange@pagebox.net
Export-Package: javax.servlet.jsp.tagext
Bundle-Description: tag extension
Import-Package:
javax.servlet,javax.servlet.jsp,javax.servlet.http,org.apache.jasper,org.apache.jasper.runtime
```

3. It is not enough because taglibs have exceptions, JspTagException that inherits from JspException, defined in javax.servlet.jsp but not in tcatspruntime. I chose adding them to JSPservlet package.
4. I replaced Beans.instantiate(getClassLoader(), myBean) by Beans.instantiate(getClass().getClassLoader(), myBean) in compiled JSPs.

You can consider an alternate solution where you add the JSP related stuff to JSPservlet.

JSP packaging of JES 2 will probably be enhanced in the coming months and the most important point here is that embedded servers can support JSP V 1.1.

## 7 Differences between Application Server and JES 2 version

Application Server version supports Servlet 2.2.

JES 2 version supports JES 2 Servlet 2.1.

Both versions should follow closely framework versions in the future.

Regarding development, it is the main difference.

The major design difference is

- ?? In the application server version, a service servlet, JSPservlet forwards requests to the target servlet
- ?? In the JES2 version, the package registers every servlet in the framework. The service servlet, JSPresourceServlet handles only resources.
- ?? As a consequence, JES 2 framework invokes directly the target servlets.

This has two important implications:

1. In case of archive update, there is no window where a request should hang but there is a window where a request can fail because the previous servlet version was unregistered and the new version was not yet registered.
2. If an archive certificate is revoked, you need to update the archive or restart the server for the revocation to be detected.

I chose to design the JES 2 version in that way to minimize its footprint.

## 8 Miscellaneous

### 8.1 License

This program is free software; you can redistribute it and/or modify it under the terms of the GNU General Public License as published by the Free Software Foundation; version 2 of the License.

This program is distributed in the hope that it will be useful, but WITHOUT ANY WARRANTY; without even the implied warranty of MERCHANTABILITY or FITNESS FOR A PARTICULAR PURPOSE. See the GNU General Public License for more details.

## 8.2 Deliveries

Package name: JSPLoaderPkg.

### Source files:

CRLchecker.java	JNDI/LDAP code
JSPLoader.java	class loader
JSPLoaderException.java	package exception
JSPHandler.java	Web application handler
JSPResourceServlet.java	Resource handling servlet
PageBoxAPI.java	API to get the PageBox ID and log user messages
ResourcePrivilegedAction.java	resource loader
ServletLog.java	servlet to clear and display log
ServletStat.java	servlet to display stats
ServletUpdate.java	update servlet

### Documentation:

?? This document  
?? javadoc